

RECEIVED

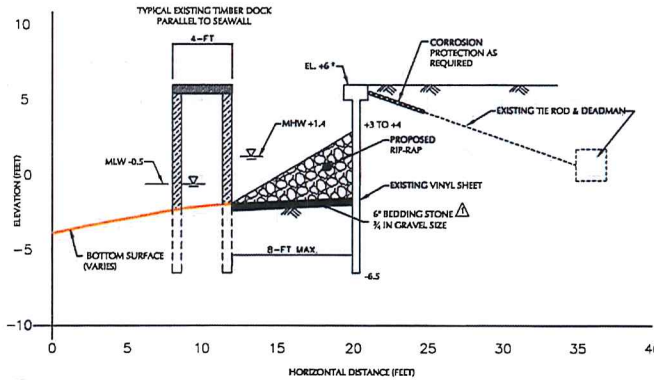
JUL 12 2016

EPC OF H.C. WETLANDS

REVISED

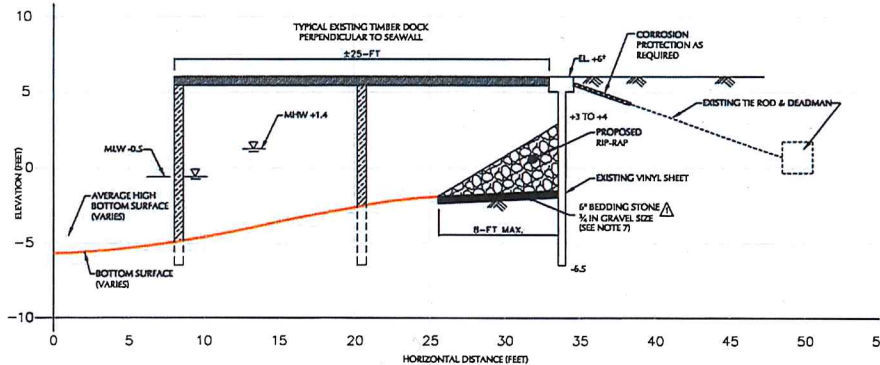
Replaces Drawing Received 8-25-15

OPTION 1
NEW RIP-RAP BERM
CONCEPTUAL TYPICAL PROFILE



EPC PERMIT
A-4 CB
EXHIBIT

OPTION 1
NEW RIP-RAP BERM
CONCEPTUAL TYPICAL PROFILE



NOTES:

1. DIMENSIONS AND SLOPE OF RIP-RAP ARE EXPRESSED AS MAXIMUMS AND ARE WITHIN A TOLERANCE OF +/- 1 FT.
2. CURRENT SLOPE SURFACE ELEVATIONS BASED UPON "BATHYMETRIC SURVEY" PREPARED BY GEOPONT, INC., DATED 7 JULY 2015.
3. NO MODIFICATIONS ARE INTENDED TO BE MADE TO EXISTING DOCKAGE.
4. ELEVATIONS ARE REFERENCED TO NVD 1929.
5. A REPLACEMENT SEAWALL SHALL BE CONSTRUCTED WITHIN EIGHTEEN (18) INCHES FACE TO FACE OF THE ORIGINAL VERTICAL ALIGNMENT OF THE EXISTING WALL.
6. RIP-RAP MATERIAL SHALL CONSIST ENTIRELY OF UNCONSOLIDATED CLEAN CONCRETE RUBBLE OR NATURAL BOULDERS SIX (6) INCHES TO THREE (3) FEET IN AVERAGE SIZE.
7. BEDDING STONE IS A 6 INCH THICK STABILIZING BASE LAYER PLACED UNDER THE RIP-RAP MATERIAL AND CONSISTS OF 3/4-INCH CLEAN UNCONSOLIDATED STONE.

LEGEND:

- MLW MEAN LOW WATER
- MHW MEAN HIGH WATER
- FRP FIBER REINFORCED PLASTIC
- AVERAGE HIGH & LOW CHANNEL BOTTOM SURFACE ELEVATION

Date	Description	No.
REVISIONS		
30 JUNE 2016	ADD BEDDING STONE	①

JOHN MAGNAVITA
 LICENSE No. 54826
 STATE OF FLORIDA
 PROFESSIONAL ENGINEER Lic. No. 54826
 DATE SIGNED: 6/11/2016

LANGAN

15150 N.W. 79th Court, Suite 200
Miami Lakes, FL 33016
T: 786.284.7200 F: 786.284.7201 www.langan.com

Langan Engineering, Environmental, Surveying and Landscape Architecture, D.P.C.
Langan Engineering and Environmental Services, Inc.
Langan International LLC
Collectively known as Langan
FL CERTIFICATE OF AUTHORIZATION No. 00006601

Project

**MIRABAY
COMMUNITY
DEVELOPMENT**

APOLLO BEACH FLORIDA

Drawing Title

**SEAWALL
REHABILITATION
CONCEPTUAL
PROFILES
OPTION 1**

Project No. 300117702

Date JUNE 2015

Scale 1" = 8'

Drawn By CM

Checked By JM

FIG. 1